



SHROPSHIRE

ARTS & CULTURAL PROVIDERS DIRECTORY

Arts and cultural organisations working
with children and young people



**CULTURE
CONSORTIUM
SHROPSHIRE**

*Great arts and culture for children
and young people in Shropshire*

SHROPSHIRE

ARTS & CULTURAL PROVIDERS DIRECTORY

Directory of arts, culture and heritage organisations, individual artists / practitioners, festivals, libraries and museums. The organisations work with and deliver programmes of arts and cultural activity for children and young people (aged 0-25) in Shropshire and are members of CCS (Culture Consortium Shropshire).

Use the directory to search for practitioners and organisations delivering exciting arts and cultural activity for children and young people in Shropshire. You will find information about the fantastic programmes of activity they are delivering. Many of the organisations and practitioners listed, deliver specific schools programmes and run Arts Award.

If you have any questions, please contact the organisations / practitioners directly using the email address and website link.

An electronic version of the directory, along with other useful resources is available at:

www.cultureconsortiumshropshire.com

Contact us:

✉ alexa.pugh@shropshire.gov.uk
☎ 01743 257734

Connect with us us:

Facebook: [@cultureconsortiumshrops](https://www.facebook.com/cultureconsortiumshrops)
Twitter: [@cultureshrop](https://www.twitter.com/cultureshrop)
www.cultureconsortiumshropshire.com



Front cover and right: © Shropshire Council/Arts



INDEX:

- 3 Arts and Cultural Development
- 4 Arts Award / Artsmark
- 5-6 Creative Media / Digital Arts / Film / Technology
- 7 Dance
- 8-11 Drama / Theatre / Circus
- 12-15 Music
- 16-22 Multi Art Forms
- 22-25 Visual Art
- 26-27 Libraries / Literature / Poetry / Storytelling
- 28-29 Museums / Heritage / Archives
- 30 Environment
- 31-32 Festivals
- 33 Youth Organisations
- 33 Venues (exhibition space, performance space & room hire)

KEY



Delivers Arts Award



Specific Schools Offer / Programme



Experience of working with children and young people with Special Educational Needs and Disability

CCS IS not responsible for the content on the third-party websites that we provide links to (although all links are made in good faith) and listing in this directory does not equate to an endorsement. All the listings are provided by professional organisations and practitioners delivering excellent high-quality programmes of work. However, we urge all schools and other users to satisfy their own safeguarding, insurance and quality requirements and to take up references.

For advice on appointing an artist and working in partnership with any of the organisations listed, please contact Alexa Pugh, Arts Development Officer, Shropshire Council. ✉ alexa.pugh@shropshire.gov.uk

Arts Connect

Arts Connect is a development agency that works to improve the quality of the arts and cultural engagement of children and young people in the West Midlands. Their aim is that all people aged 0-25 in the region can access and enjoy a rich and meaningful arts and cultural life.

One of their activities is to deliver the Bridge programme in the West Midlands for Arts Council England (ACE). Arts Connect is an initiative of the University of Wolverhampton and Culture Central.

✉ l.carlton-walker@wlv.ac.uk
 🌐 www.artsconnect.co.uk



Shropshire Council Arts

Shropshire Council Arts Development Service.

Arts Development Officer, works across the county and plays a strategic role in the development of Shropshire's arts offer. A key part of their work is widening participation and understanding of the arts, developing partnerships, managing projects and securing external investment. Developing opportunities for children and young people to engage and participate in the arts is a key priority.

✉ alexa.pugh@shropshire.gov.uk
 🌐 www.shropshire.gov.uk



Arts Award

Arts Award supports young people who want to deepen their engagement with the arts, build creative and leadership skills and achieve a national qualification. The award can be achieved at five levels, four qualifications (Explore, Bronze, Silver & Gold) and an introductory award (Discover). The awarding body responsible for Arts Award is Trinity College London.

Since its launch in 2005, the award has grown quickly and is now flourishing in arts centres, colleges and schools, community projects, libraries, galleries, local authorities, theatres, youth clubs and youth justice settings.

🌐 www.artsaward.org.uk



Artsmark

Artsmark is the creative quality standard for schools, accredited by Arts Council England. Artsmark provides a clear framework for teachers to plan, develop and evaluate arts, culture and creativity across the curriculum. Schools are supported throughout their Artsmark journey by a regional network of Bridge organisations, providing training, advice, practical teaching resources and introductions to leading cultural organisations in your area. Schools are awarded Silver, Gold or Platinum, based on their achievements. Artsmark has a common-sense application process that is light on paperwork and flexible to each school.

🌐 www.artsmark.org.uk



Kinokulture

Kinokulture is an independent community cinema in Oswestry, offering a year round programme of films including mainstream, documentary, World and British cinema as well as family friendly films and live broadcasts.

They are a venue for INTO Film Festival, offering free screenings to schools during the two-week festival in November.

They run a Young Film Programmers Forum giving 16-30 year olds the opportunity to learn about film programming, marketing and putting on a week-long film festival.

✉ info@kinokulture.org.uk
 🌐 www.kinokulture.org.uk

OSWESTRY'S COMMUNITY CINEMA
KINOKULTURE

MediaActive Projects

A legacy of Shropshire's Specialist Schools Media Arts Programme, MediaActive Projects is a local arts organisation, specialising in creative media and digital arts projects, media productions, film and visual arts programming, skills based training and CPD.

Schools Offer

MediaActive have extensive expertise and experience of working with children and young people. They work with a wide range of industry partners, independent artists and filmmakers to deliver opportunities for children and young people to participate in the arts, including film and animation.

They also offer work experience and talent development opportunities through their EXCITE programme, alongside a range of accreditation opportunities, including Arts Award.

✉ info@mediaactive.org
 🌐 www.mediaactive.org

 SEND SCHOOLS

MediaActive

Piece of String Media

Nick Fogg and Mike Smart are award-winning filmmakers. Their short films have screened at international film festivals and been broadcast on TV and they have delivered commissions for national charities, arts and heritage organisations, museums, local authorities, community organisations, businesses and the NHS.

Piece of String Media deliver workshops, projects, and training, on every aspect of the filmmaking process. They work with children and young people, in and out of school settings, helping them develop their skills and confidence to tell stories for the screen.

Schools Offer:

Work with schools to devise and deliver bespoke workshops, projects and training. The work spans the drama and factual filmmaking processes, including developing ideas, scripting, visual storytelling, acting, producing, directing, interviewing, camera, sound and editing skills.

✉ nick@nick-fogg.co.uk
 🌐 www.vimeo.com/pieceofstringmedia
 📷 www.instagram.com/pieceofstringmedia

 SEND SCHOOLS

PIECE OF
 STRING
SHROPSHIRE COMMUNITY
 FILMMAKING

© MediaActive Projects

STEAM Centre UK

Specialise in creating project based learning using STEM infused with Arts (STEAM).

Schools Offer

Deliver a number of projects involving physical computing, providing real world connections, graphic arts, ELA and Design Technology. Provide enrichment days in schools.

✉ paul@steamuk.org
 🌐 www.steamuk.org

 SEND SCHOOLS

 STEAM
 STEAM Centre UK



Shropshire Inclusive Dance

Shropshire Inclusive Dance's (SiD) vision is simple, to create environments where people from all backgrounds and abilities can participate in the joy of dancing together.

Their work reaches out to the whole community offering performances, projects and regular classes where people can dance together.

SiD offers dance opportunities and workshops for children and young people with and without physical and learning disabilities.

All-In is SiD's inclusive youth dance programme for 12-19 year olds, it includes taster workshop, regular classes and holiday activity.

SiD runs creative learning projects for special and mainstream schools, as well as for local communities. Projects can vary in length from one day to one week, or run as weekly sessions over a school term.

✉ directorsidance@gmail.com
 🌐 sidance.live

SEND SCHOOLS



Above and below: © Shropshire Inclusive Dance



Arts Access Association

Arts Access Association delivers services to statutory and community sector organisations. They provide an artist and entertainment agency, event and programme consultancy. Their Roots to Inspiration programme delivers: professionally led introductory workshops and sessions or bespoke programmes in circus arts, street (style) theatre and outdoor performance, traditional theatre skills and storytelling. The programme includes a certification system where appropriate.

Schools Offer:

Introductory workshops and sessions or bespoke programmes and consultation on event management, programme development and integration of arts and creativity into curriculum based delivery.

✉ thejester@homely.totalserve.co.uk
 🌐 www.artsaccess.org.uk
 🌐 www.roots2inspiration.co.uk

SEND SCHOOLS



Ignition Create CIC

Not for profit arts organisation working with professional artists to deliver participatory theatre projects for social change in schools and community settings. Ignition create and deliver bespoke and inclusive theatre programmes that use multiple arts disciplines to offer children, young people and adults the opportunity to participate in high quality artistic experiences with strong social and interpersonal outcomes.

Schools Offer:

Creative CPD for staff including: drama in the primary curriculum, using drama for behaviours that challenge inclusion, drama and SEND, drama after school and nurture groups and wellbeing.

✉ hannah@i-gnition.co.uk
 ✉ kate@i-gnition.co.uk
 🌐 www.i-gnition.co.uk

SEND SCHOOLS



Above and below: © Ignition Create

Ingenuity Youth

Ingenuity Youth is run by qualified dance and drama teachers, with over 10 years' experience of working with young people in education and community settings. They provide accessible, engaging and enjoyable arts activities both within the curriculum and as enrichment.

Schools Offer:

Ingenuity Youth work with schools and organisations across Shropshire to provide ongoing projects or one-off workshops to support the curriculum and enrichment aims. They offer everything from GCSE exam support and preparation, to technique classes. They are flexible and will make every attempt to accommodate your specific needs.

✉ ingenuityyouth@gmail.com
 🌐 ingenuityyouth.webstarts.com



Pentabus

Pentabus develop and produce high quality new theatre about the contemporary rural world. Plays are toured throughout the country and have a local impact and national resonance. Pentabus Young Company is a year-round programme of workshops offering young people 16 – 25 the opportunity to meet leading industry professionals, learn new skills and share experiences with other young emerging artists and creatives.



Pentabus Young Writers is a series of free workshops. The team teach the principles of great playwriting, and how production elements like acting, writing and design can make a story come to life onstage.

✉ kitty@pentabus.co.uk
 ✉ andrew@pentabus.co.uk (young company and writers)
 🌐 www.pentabus.co.uk

PENTABUS

Shropshire Youth Theatre

Provides Theatre activities for children and young people aged 5 to 25 years, specialising in classical drama.

Schools Offer:

Shropshire Youth Theatre can offer the following workshops: drama - developing a character, bringing Shakespeare alive, dances from the Tudors and dances from the Medieval period.

These are primarily creative workshops, but bringing communal dance into schools encourages team work, communication, problem solving and community.

✉ sytmaggie@yahoo.com

🌐 www.shropshireyouththeatre.co.uk

SCHOOLS



Theatre Severn

Programme of live events including; musicals, drama, dance, opera, comedy and live music, plus exhibition space, dance studio, restaurant and room hire.

✉ mail@theatresevern.co.uk

🌐 www.theatresevern.co.uk



Andy Lowe

Andy offers sound recording services as well as tuition in contemporary music production techniques. Coaching/mentoring and opportunities for singer-songwriters and bands available. Andy also runs Shrewsbury Youth Gospel Choir and can provide gospel singing workshops for youth groups.

Schools Offer:

Run a Recording Studio Experience. A hands-on workshop giving children/young people the opportunity to use and understand sound recording equipment. They will make beats using instruments, microphones and hi-tech software and hardware. Groups of 4-6 ideal.

✉ andy@hopesounds.co.uk

🌐 www.andylowe.co

SEND SCHOOLS



© Andy Lowe - Hope Sounds



Jon Hayward Memorial Trust

The Jon Hayward Memorial Trust provides individual bursaries to cover 50% (or more in exceptional circumstances) of the cost of music lessons, instrument hire or other musical activities for children living in the Shropshire Council area.

Bursaries are awarded in July, for the following academic year, to children in Years 3-6, who would otherwise be unable to access musical opportunities. Referral forms are emailed to all primary schools in June each year.

Schools Offer:

Individual financial support to assist primary school children in Yrs. 3 and above to access musical opportunities.

✉ jonhaywardmemorialtrust@hotmail.co.uk

SEND SCHOOLS



Ray Langton Music

Ray and Bev Langton are specialists in the traditional Folk Arts and offer a range of workshops and talks for children, adults and families. Workshops include: Morris dancing, mini melodeon playing (squeezeboxes), percussion and themed arts and crafts. Workshops can be tailored to fit themes in schools and community settings e.g. English Heritage, British History, English Cultural events, along with providing shows for all ages.

Schools Offer:

A variety of workshops within the Folk Arts genre e.g. mini melodeon playing, Morris dancing, Longsword dancing, percussion, Folk Music workshops and craft activities. Can also deliver themed events and assembly presentations.

✉ bev.langton@talk21.com

🌐 www.raylangton.com

SEND SCHOOLS

Ray Langton Music

Shropshire Music Service

The aim of the Music Service is to provide, develop and support the highest quality of music education in Shropshire and to give young people performing opportunities in schools and in the community.

In addition to school-based tuition we offer provision for early years settings, which incorporates staff CPD alongside the delivery.

We have an extensive range of ensembles which are open to students of all abilities and include some opportunities for adults to get involved.

Schools Offer

Shropshire Music Service provides instrumental, vocal and curriculum support for schools throughout Shropshire.

✉ alison.stevens860@shropshiremusicservice.org.uk

🌐 www.shropshiremusicservice.org.uk

SEND SCHOOLS



Shropshire Music Trust

Shropshire Music Trust works with partners and professional musicians to offer a programme of high quality participatory musical performances in schools and the community.

Schools Offer:

Organise performances in schools from professional musicians contributing to or associated with the annual Shropshire Music Season. Can provide tailor-made projects to support a particular need or project.

✉ info@shropshiremusictrust.co.uk

🌐 www.shropshiremusictrust.co.uk

SEND SCHOOLS



The Shropshire Ukulele Massive

The Shropshire Ukulele Massive is an ongoing community project that aims to help children, the homeless, the aged, and other vulnerable people to learn and play ukulele music in community venues.

Celebrating all things ukulele, they programme and manage an annual music festival "Shrewkfest", featuring quality musicians as well as offering attractive participation activities.

Schools Offer:

Ukulele workshops run in schools.

✉ info@shroprock.co.uk
 🌐 www.shroprock.co.uk

SCHOOLS



Whack It Smack It - junk music with a difference

'Whack It Smack It' make and play musical instruments from scrap. Their aim is to demonstrate that musical instruments are accessible to all and that multiculturalism is an integral part of artistic activities. Experienced in running workshops in a number of community settings. Recycling, upcycling and better management of waste materials is essential to preserving the environment.

Schools Offer:

Run a programme which aims to educate young people in the need to recycle and reuse scrap materials. Scrap materials are used by children and young people to make musical instruments (percussion and melodic).

✉ malbrownace@aol.co.uk

SEND SCHOOLS

Arts Alive

Arts Alive organises over 1000 arts events a year including live music, drama, dance, film, puppetry and storytelling, presenting this work throughout Shropshire and Herefordshire. Arts Alive is dedicated to providing local people in rural areas with the opportunity to experience professional arts events in their local venue.

There are many opportunities for young people to get involved in the programme, as audience members, participants, promoters and reviewers. Workshops accompany some of the events.

✉ cerin@artsalive.co.uk
 🌐 www.artsalive.co.uk



Four and Twenty Arts

A collective of artists, educators and theatre makers based in Wem. They deliver inclusive and engaging, environmental and educational arts projects for schools, youth clubs, libraries, communities, festivals and events.

Schools Offer:

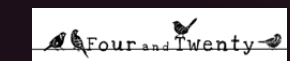
Engaging, environmental and educational arts exploring our natural world. They deliver one off arts experiences and project based learning with links to the curriculum. Themes can include: cabinets of curiosity, evolution art, map art, recycled art, carnival art, experimental drawing and sculptures, flags and banners and S.T.E.A.M based projects.

✉ kate@fourandtwenty.org
 🌐 www.fourandtwentyarts.org

SEND SCHOOLS



© Four and Twenty Arts



© Arts Alive

Loudwater Studio

Creative activities for home educated children aged 6-18 including ceramics, textiles, painting and drawing.

Registered Arts Award Centre delivering Discover, Explore, Bronze and Silver award.

School holiday activities for 8-13's and pre-school group for babies and toddlers.

Schools Offer

Workshop programme.

✉ nicola.hook@visionhomes.org.uk
 🌐 loudwaterstudio.org.uk



Ludlow Assembly Rooms

Ludlow Assembly Rooms covers a wide range of events and activities to engage children and young people. A series of children's events, workshops and film screenings is run during school holidays. The Assembly Rooms work in partnership with Ludlow Library during the summer on The Big Friendly Read.

Schools Offer:

They work with IntoFilm to host free film screenings for schools and offer curriculum-related screenings and live streaming's by request. A safe and accessible professional theatre space is available for rehearsals and productions.

✉ helenhughes@ludlowassemblyrooms.co.uk
 ✉ westley@ludlowassemblyrooms.co.uk
 🌐 www.ludlowassemblyrooms.co.uk

SCHOOLS



The Hive

Delivers social impact through arts and creative projects and activities, with a special focus on children and young people from disadvantaged backgrounds and other hard to reach groups.

Schools Offer:

Tech to Tune music workshops for secondary schools which offer creative approaches to STEM disciplines. Spoken word / slam poetry workshops with award winning performance poet, singer/ songwriter and playwright Spoz. The Hive can sometimes offer SEND and rurally

isolated schools subsidised workshops in a variety of art forms. Parachute workshops for under 5s including music and movement, messy play, storytelling and pottery. The Hive have multiple outreach opportunities for creative workshops through MYCollege, working with young adults (ages 16-30 years) struggling with the transition to independence.

✉ admin@hiveonline.org.uk
 🌐 www.hiveonline.org.uk



THE HIVE

All Images: © The Hive





© Participate

Participate

Participate Contemporary Artspace CIC is a creative hub with 15 artist studios as well as hireable exhibition and project spaces. Participate, offers a variety of workshops for all ages and a Summer Art School for 11-19 year olds. Participate artists, many of whom have worked in education, bring different skills and approaches to media and ideas generation. They share these through workshops and events with an 'art is for everyone' approach.

Schools Offer:

Artists have experience in delivering creative CPD sessions for teaching staff as well as school-based projects. Arts Award Centre with two assessors trained to deliver both Bronze and Silver, with a 100% success rate.

✉ participatestudios@gmail.com
 🌐 www.participateart.org



Qube

Qube is an Oswestry based charity providing arts, wellbeing, and transport services for the community in North Shropshire and the border counties.

Qube offers a thriving and vibrant arts programme in a fully accessible creative centre. This includes a ground floor exhibition space, balcony gallery, art room and small performance hall. Qube also runs a regular programme of courses focusing on art and craft, wellbeing and business.

Schools Offer:

Offer exhibition visits and tours, creative art workshops, partnership exhibitions, work experience opportunities and volunteering opportunities.

✉ j.creed@qube-oca.org.uk (arts development)
 ✉ c.jackson@qube-oca.org.uk (arts and exhibitions)
 🌐 qube-oca.org.uk



All images © Qube

SpArC

SpArC is an arts and leisure centre in Bishops Castle. SpArC offers a diverse programme of live theatre and music, international satellite screenings, films, community events, workshops and an art gallery.

✉ liz@sparctheatre.co.uk
 🌐 www.sparctheatre.co.uk





All images: © Wem Town Hall

Wem Town Hall

Wem Town Hall aims to facilitate social enterprise, community empowerment and community cohesion through an accessible, user-friendly and high quality venue and programme. Programme includes theatre, music, dance, film, satellite broadcasts, visual arts and crafts and exhibitions.

✉ info@wemtownhall.co.uk
 🌐 www.wemtownhall.co.uk



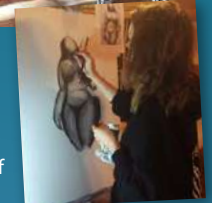
Wyldwoods

Wyldwoods encourages and supports personal and social development. Activities are wide ranging and utilise both the outdoor and indoor environments, they include: pottery, pewter casting, enamelling, cooking and baking, felting and greenwood crafts. For those in receipt of a personal budget Wyldwoods offer regular workshop sessions. Staff have many years of experience working with people with additional needs, learning difficulties, mental health issues and dementia or those on the Autism spectrum.

✉ steph.brett@wyldwood.co.uk
 🌐 www.wyldwoods.co.uk



© Wyldwoods



© ArtShack

ArtShack

ArtShack is a small rural venue based just outside of Shrewsbury that provides creative workshops.

Participants can attend specialist artist led workshops in a variety of disciplines and develop their creative practice on personal development days. As well as offering workshops for adults, ArtShack also offer high quality arts opportunities for art students and young people.

Schools Offer:

Offer extra-curricular support for GCSE and A-Level Art and design students who are looking for more 'studio time', more support, or who are looking to experiment with different media. Help students to build and develop their portfolios for interviews. Also offer creative training and workshops for teachers in all creative areas, including painting, textiles, printing and ceramics.

✉ info@myartshack.co.uk
 🌐 www.myartshack.co.uk

SEND SCHOOLS





© Bethan Page

Bethan Page

Art and education consultant and workshop leader. Bethan delivers exciting visual arts workshops and projects for all age groups, from single to sequential sessions. Projects usually involve working with low-cost and recycled materials to create collaborative artworks. Bethan is an experienced project evaluator.

Schools Offer

Programme of workshops and projects.

✉ bethan.page@gmail.com



DASH

DASH is a Disability led visual arts organisation. We work with arts and cultural organisations and individuals regionally and nationally.

✉ paula@dasharts.org
 🌐 www.dasharts.org/projects

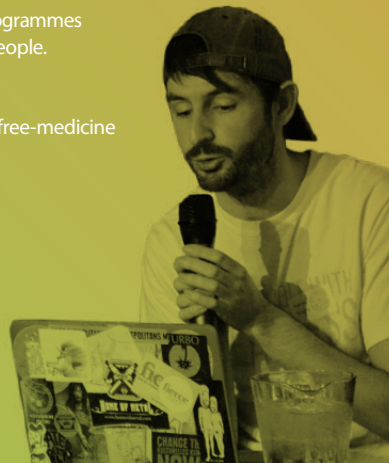


© Dash

DASH Young Artists

DASH develops and runs arts programmes specifically for disabled young people.

✉ sarahc@dasharts.org
 🌐 www.dasharts.org/projects/free-medicine



Meadow Arts: contemporary art in unusual places

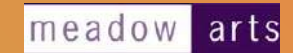
Meadow Arts brings unique contemporary art projects to places where art is not usually shown, supporting artists by commissioning new work and creating inspiring events and exhibitions, including public workshops and individually tailored arts education projects.

Schools Offer:

Meadow Arts Inspires is an in-school visual art programme. Meadow Arts work with individual schools to create bespoke art projects. Each school is matched with a professional creative

practitioner who is able to engage children of all ages and abilities, as well as offer CPD training to staff. Funding support towards artistic fees and expenses is available. Work can be delivered under any theme of the schools choosing.

✉ info@meadowarts.org
 🌐 www.meadowarts.org



Mostly Flat

Mostly Flat is a letterpress printmaking studio run by Ludlow artist Dulcie Fulton. Working with wood and metal moveable type and antique printing presses, Dulcie introduces students aged 4 to 18 to the fascinating history, heritage and process of letterpress printing. She runs letterpress workshops for small groups at her studio, and also takes her presses out to schools, events and festivals.

Schools Offer

Letterpress workshops and artist in residence.

✉ hello@mostlyflat.co.uk
 🌐 www.mostlyflat.co.uk



© Mostly Flat



© Octopus Arts

Octopus Arts Shropshire

Octopus Arts have over 20 years' experience providing visual arts projects, residencies and activities for schools and communities, designed to enhance the physical environment and enrich learning across the school curriculum.

Schools offer:

Arts projects, residencies and activities for schools and educational establishments. Offer curriculum enhancement or cross-curricular workshops in any subject, activities for special events, after school clubs and staff training in a wide range of art forms including drawing, painting, textiles, carnival arts, recycling, willow sculpture, printing and much more.

✉ octopusartsshropshire@yahoo.co.uk
 🌐 www.octopusartsshropshire.co.uk



Raven Studios

Raven Studios are a community interest company dedicated to creative wellbeing. They offer a creative space, studios, rooms for hire, workshops, exhibition space, expertise in curating exhibitions and deliver arts and health projects.



© Raven Studios

Schools Offer

As well as adult workshops Raven Studios offer arts award, summer art school and term time weekend drop-in studio time with art activities for young people aged 14-25. Resident artists based at Raven Studios also work in schools.

✉ ravenstudios.shrewsbury@gmail.com
 🌐 ravenstudiosshrewsbury.wordpress.com



© Scrapies

Scrapies

The Shropshire Children's Scrapstore Recycling and Resource Centre (Scrapies), supplies many organisations throughout Shropshire with creative arts and educational resources.

Schools Offer

Scrapies has a team of professional artists who are able to deliver creative arts workshops and programmes for children, young people and adults. Scrapies run training workshops for people who work with children through PD days and also for people working with children with special and additional needs.

✉ info@scrapies.org
 🌐 www.scrapies.org



Bethany Rivers

Bethany Rivers is a published author and poet who has taught creative writing for over 13 years and runs workshops in schools. She delivers fun and innovative workshops to get students being creative, enjoying language and expressing themselves in new ways.

Schools Offer

Workshop programme.

✉ bethanyrivers77@hotmail.co.uk
 🌐 www.writingyourvoice.org.uk



Shrewsbury Bookfest

Shrewsbury Bookfest, brings the world of books alive for children, to inspire and enthuse them with a love of reading. Through a series of annual projects with both schools and families (annual children's literature Festival), Shrewsbury Bookfest is one of the only organisations of its kind working with primary school age children in Shropshire and Telford & Wrekin.

Schools Offer

Shrewsbury Bookfest's Book Awards is a child-led reading development initiative delivered into

Jean Atkin

Jean Atkin is an award-winning poet, children's novelist and experienced educator. She works regularly in schools, providing lively workshops, readings and discussions for all ages from 6 to 18. Jean works as a poet in residence, she also tutors for the Arvon Foundation and The Poetry School.

Schools Offer:

Jean provides inventive, flexible workshops and readings, to schools, festivals and community organisations.

✉ jean@wordsparks.co.uk
 🌐 www.jeanatkin.com





© Shropshire Libraries

Shropshire Libraries

Shropshire Libraries cover the county with 21 libraries and 3 mobiles. Many of the libraries are within small rural communities and act as important community hubs.

Children & Young People work is led by a central team and offers specialist knowledge of children's literature and supporting reluctant readers.

Shropshire Libraries is also an Arts Award Centre and ArtsMark Partner. They deliver Arts Award Discover and Explore.

All libraries in Shropshire are keen to work in partnership with schools and other arts organisations to develop projects and long lasting relationships to encourage children to engage with literacy and creativity.

Schools Offer:

Fab Reads - a supported Reading Group for reluctant readers in Key Stage 2; Arts Award and ArtsMark Partner; volunteering opportunities for young people; we are interested in working with schools looking to become Schools of Sanctuary; school visits to local libraries; library induction including story time; working with schools to develop projects to support Ofsted's new framework emphasising a broad and balanced curriculum.

✉ libraries@shropshire.gov.uk
 🌐 www.shropshire.gov.uk/libraries



Ironbridge Gorge Museums Trust

The Museum has a lifelong learning programme offering self-led visits with teacher resources alongside workshops and activities delivered by the learning team on a wide-range of curriculum subjects.

Schools Offer:

The Museums provide a perfect learning experience that extends beyond classrooms and helps teachers deliver many different aspects of the National Curriculum in a creative and inspiring way. Subject areas covered include history, art, STEM, english and geography across all key-stages.

From self-led immersive visits with teacher resources to carefully planned and delivered workshops that include brick-making, ceramic tile decorating, print-making, and bridge building.

✉ education@ironbridge.org.uk
 🌐 www.ironbridge.org.uk/learning



© Ironbridge Gorge Museums Trust



Shropshire Archives

Shropshire Archives offers opportunities for students and young people to discover our unique collections. The learning team at Shropshire Museums and Archives provide a curriculum linked workshop programme for schools, as well as professional development courses for teachers and educators. Workshops include Medieval and Tudor Shropshire, A local study, The first World War in Shropshire and English Language and Literature. Individual students are also very welcome to use our services for research projects.

Schools Offer:

Practitioner led workshops exploring the wealth of Shropshire Archives' collection. Can be tailored to the school's locality and subject interest. On line resources at www.archivezone.org.uk and www.shropshirearchives.org.uk providing classroom based activities for schools to use as required.

✉ museumeducation@shropshire.gov.uk
 🌐 www.shropshirearchives.org.uk/learning/

SEND SCHOOLS



© Shropshire Archives



Shropshire Museums

Active learning workshops led by experienced museum educators. All sessions have workshop activities. Museums hold major sources of primary evidence required for much of the national curriculum. Teachers are invited to work with relevant collections and to make free preliminary visits to the museum sites (sites managed by Shropshire Council).

Schools Offer:

The Learning team at Shropshire Museums and Archives offer opportunities for learners of all ages to discover the unique sites and collections cared for by Shropshire Council. Activities include a curriculum linked workshop programme for schools and home educators, early years and family workshops and professional development courses for teachers and educators.

✉ museumeducation@shropshire.gov.uk

🌐 www.shropshire.gov.uk/museums/education-and-outreach

SCHOOLS



© Shropshire Museums

Shropshire Wildlife Trust

Shropshire Wildlife Trust offer a range of sessions for primary school children at unique locations such as Darwin's Childhood Garden in Shrewsbury. They deliver inspiring, practical, outdoor sessions in wild places or at your school.

Expert leaders know their mountains from their molehills, are first aid trained and have years of experience in delivering outdoor education.

All school sessions are carefully planned to achieve curriculum-linked learning outcomes.

Schools Offer:

Inspirational, outdoor learning experiences for primary school children at unique locations such as Wood Lane Nature Reserve (working quarry,

landfill and recycling centre). Work with schools long-term to use their local green spaces to embed outdoor learning and nature into their curriculum. Offer the John Muir Award Scheme for pupils of year 4 and above and provide alternative curriculum sessions for secondary school pupils and SEND groups.

✉ Elliel@shropshirewildlifetrust.org.uk

🌐 www.shropshirewildlifetrust.org.uk/school-sessions

SEND SCHOOLS



Shropshire
Wildlife Trust



Ludlow Fringe Festival

Ludlow Fringe is an independent arts and culture festival which provides an annual inclusive, vibrant and diverse arts festival. Provides fringe events and arts activities for all and is forging links with other Fringe Festivals worldwide through the World Fringe Network.

✉ anitabigsby@ludlowfringe.co.uk
 🌐 www.ludlowfringe.co.uk



Above and below: © Ludlow Fringe Festival



Shrewsbury Cartoon Festival

Shrewsbury Cartoon Festival is an annual event. Top cartoonists from around the UK and beyond come to Shrewsbury to draw cartoons and caricatures for the public and lead workshops. The festival programme includes cartoon exhibitions and illustrated talks.

✉ shrewsburycartoonfestival@gmail.com
 🌐 shrewsburycartoonfestival.wordpress.com



© Shrewsbury Cartoon Festival



© Shrewsbury Folk Festival

Shrewsbury Folk Festival

Annual festival. The Folk Festival delivers an exciting programme of activity for children and young people through Pandemonium! and Refolkus. 0 to 20 years olds engage in a weekend of music, dance, song, drama and crafts.

Schools Offer:

Spring/summer term activities for school age children in music and dance. Delivered as individual projects, funding dependant.

✉ Joy@shrewsburyfolkfestival.co.uk
 🌐 shrewsburyfolkfestival.co.uk

SCHOOLS



© Live Arts

Wenlock Olympian Games Live Arts Festival

The Live Arts Festival takes place annually in Much Wenlock.

Competitive classes take place in dance, music and speech and drama (including creative writing) for children and young people aged 18 and under.

The Festival enables competitors to perform in front of a supportive audience; receive constructive feedback from professional adjudicators and enjoy celebrating and seeing the work of their peers.

✉ livearts@wenlock-olympian-society.org.uk
 🌐 www.wenlock-olympian-society.org.uk/live-arts-festival

SCHOOLS



Shropshire Youth Association

SYA believes that “the right intervention turns around lives” and so delivers personal, social and informal education using a youth work approach. SYA support voluntary youth clubs and delivers its own clubs and projects including: Shifty’s Drug & Alcohol project, Shropshire Young Health Champions Project and XYZ Youth Group for LGBT+ young people.

SYA use group work approaches incorporating art and drama activities to deliver informal education to young people; designing projects around issues identified by schools and young people themselves.

✉ info@sya.org.uk
 🌐 sya.org.uk



Venues (exhibition / space to hire)

Ludlow Assembly Rooms

Arts venue with exhibition space, dance studio, performance space, restaurant and room hire.

✉ helenhughes@ludlowassemblyrooms.co.uk or
 ✉ westley@ludlowassemblyrooms.co.uk
 🌐 www.ludlowassemblyrooms.co.uk

Participate

Participate Contemporary Artspace CIC, is a town centre creative hub with 15 Artist studios as well as hireable exhibition and project spaces.

✉ participatestudios@gmail.com
 🌐 www.participateart.org

Qube

Accessible creative centre with ground floor exhibition space, balcony gallery, art room and small performance hall.

✉ Arts Development; j.creed@qube-oca.org.uk
 ✉ Arts & Exhibitions; c.jackson@qube-oca.org.uk
 🌐 qube-oca.org.uk

SpArC

Arts and leisure centre with exhibition space, room hire and performance space.

✉ liz@sparctheatre.co.uk
 🌐 www.sparctheatre.co.uk

Theatre Severn

Theatre with exhibition space, dance studio, restaurant and room hire.

✉ mail@theatresevern.co.uk
 🌐 www.theatresevern.co.uk

The Hive

Arts venue, 100 seat performance space, with music studio, gallery space and meeting room.

✉ admin@hiveonline.org.uk
 🌐 www.hiveonline.org.uk

Wem Town Hall

Accessible, user-friendly and high-quality venue with exhibition space, room hire, performance space.

✉ info@wemtowhall.co.uk
 🌐 www.wemtowhall.co.uk



ARTS & CULTURAL PROVIDERS DIRECTORY

The Culture Consortium Shropshire is a Local Cultural Education Partnership.

The consortium is supported by Arts Connect (the Arts Council England funded Bridge organisation for the West Midlands).

It is a network of organisations, from: arts, culture and heritage; festivals; education; libraries; local authority and other relevant organisations.

Through the consortium, organisations are working together collectively to improve the cultural offer for children and young people living in Shropshire.

If you would like to become a member of CCS, please email ✉ alexa.pugh@shropshire.gov.uk

Funded by Arts Connect and Shropshire Council

Directory Produced August 2019.

An electronic version of the directory along with use other useful resources is available at:

🌐 www.cultureconsortiumshropshire.com



www.cultureconsortiumshropshire.com